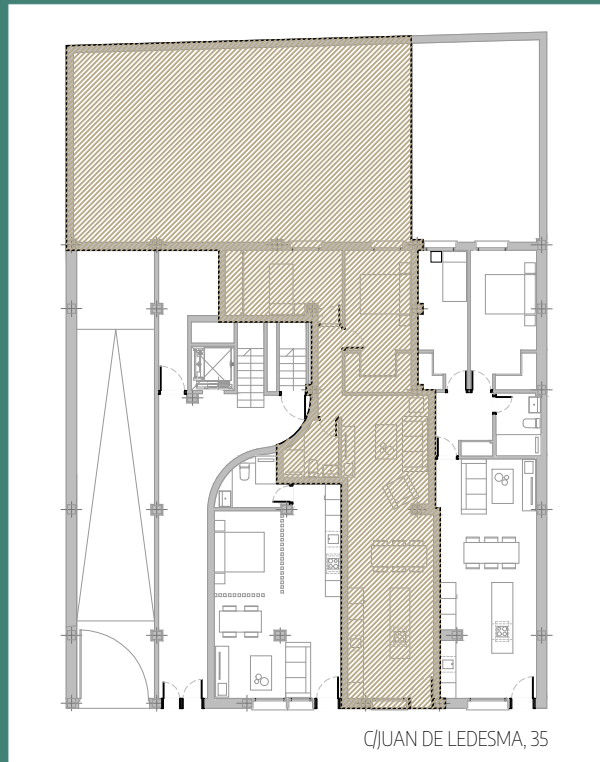


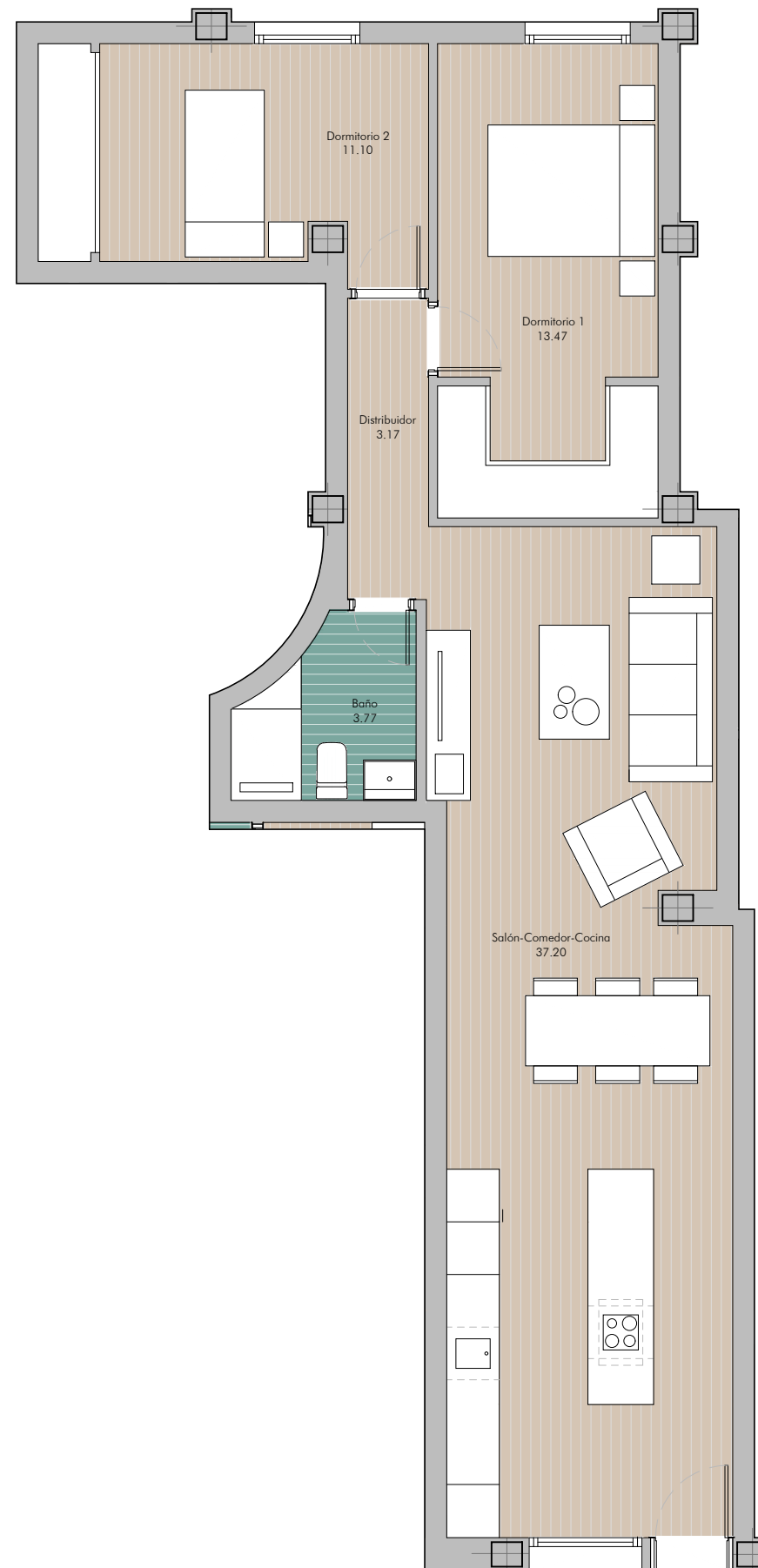
VIVIENDAS BOREALIS

SEVILLA > CALLE JUAN DE LEDESMA, 35

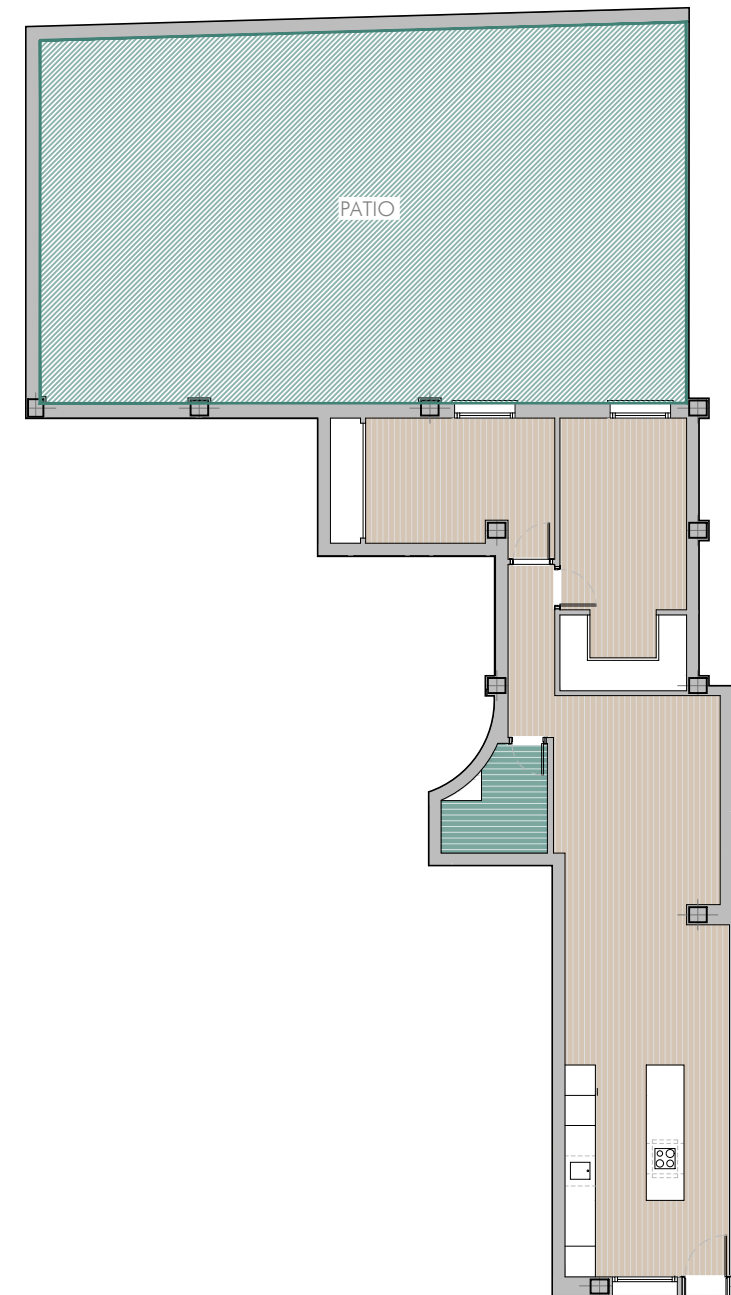


VIVIENDA 02  
2 DORMITORIOS

SUPERFICIES:  
 - SUPERFICIE PATIO : 94.58 m<sup>2</sup>  
 - SUPERFICIE ÚTIL : 68.71 m<sup>2</sup>  
 - SUPERFICIE CONSTRUIDA : 79.34 m<sup>2</sup>  
 (Incl. p/p Z.Z.C.C.)



**Bajo B**  
Planta Baja



E: 1/150